



TOWN COUNCIL PRESENTATION

09 JULY 2024



CAPLEA COE ARCHITECTS, INC. | 1643 Means Street | Charleston, SC 29412 | (843) 577.6073 | www.capleacoe.com



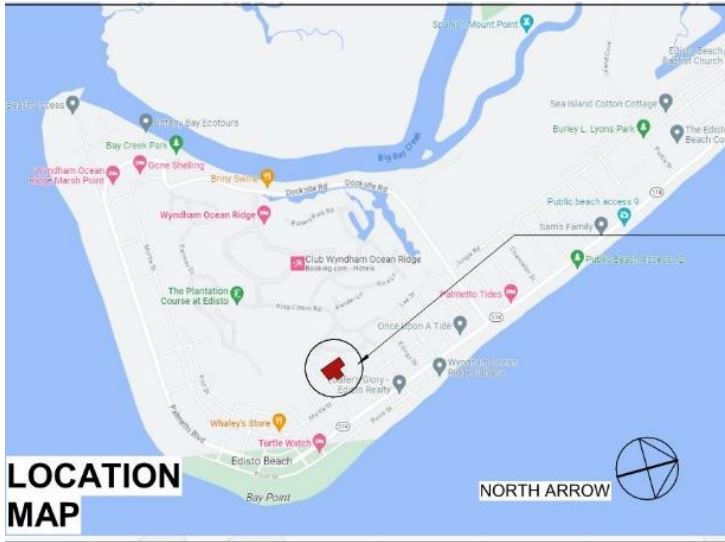
ABOUT

Edisto Beach Town Hall

Town Hall is located at 2414 Murray Street. The current Town Hall was built in 1985 on a 0.26-acre site (Lots 9 & 10 Block UU). It is a one-story building and began as 2,491 square feet and was renovated in 2005 by Charleston Constructors for \$148,000 and is now 3,042 SF. The construction is wood frame on a concrete slab (elevation 11.90'MSL) with brick and vinyl exterior walls.

The Fire Department was built in 1986. It is a 4,990 SF metal building at a slab elevation of 12.21' MSL. Most of this building is used for fire engine parking. The Police Department and Municipal Court are also housed in this building

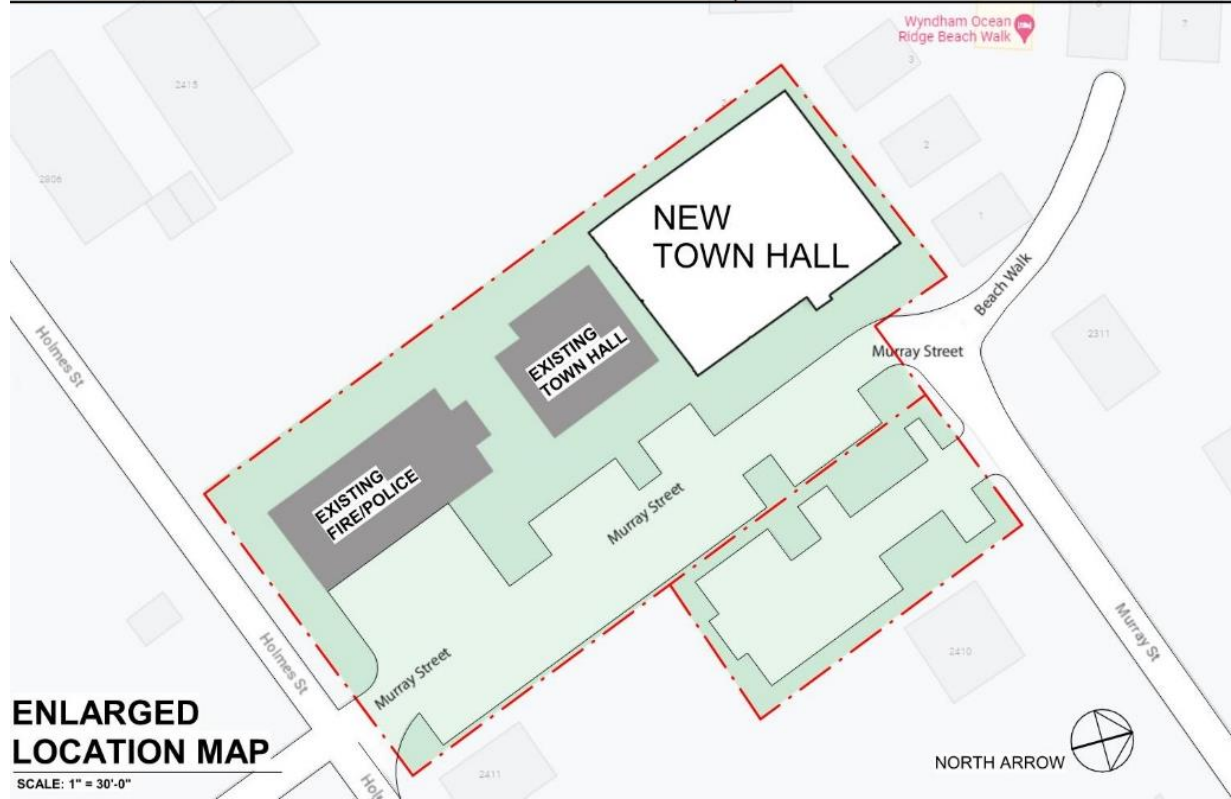
LOCATION MAP



PROJECT SITE:
2414 MURRAY STREET
EDISTO BEACH
COLLETON COUNTY
SOUTH CAROLINA
29438

SITE LOCATION

2414 MURRAY ST, EDISTO BEACH



ENLARGED LOCATION MAP

SCALE: 1" = 30'-0"

DESIGN SCHEDULE

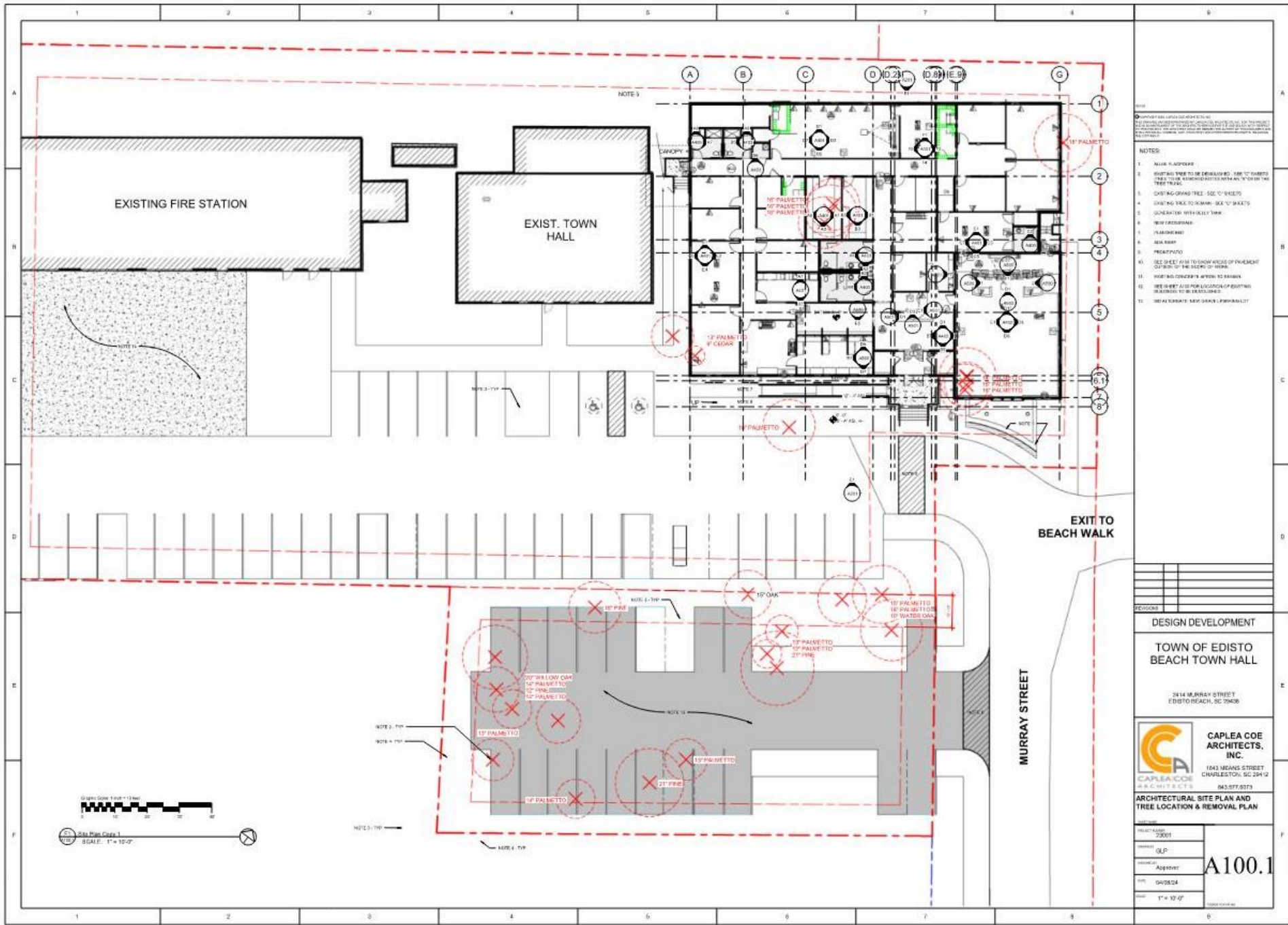
Design Phases.....complete by end of August 2024

- Schematic Design Phase (complete)
- Design Development Phase and Cost Estimate (complete)
- Construction Documents Phase and Cost Estimate

Public Bid Period.....September-October 2024

Council Approval and Contract Period.....November 2024

Construction..... 12 – 14 month construction period



OWNER: TOWN OF EDISTO BEACH
 PROJECT: TOWN HALL
 DATE: 04/20/24

- NOTES:**
1. ALL AS SHOWN.
 2. EXISTING TREE TO BE DEVELOPED. SEE 'C' SHEETS FOR TREE TAGS.
 3. EXISTING GRASS TREE - SEE 'C' SHEETS.
 4. EXISTING TREE TO REMAIN - SEE 'C' SHEETS.
 5. GENERATOR WITH FUEL TANK.
 6. NEW FLOORING.
 7. FLOORING.
 8. ADA RAMP.
 9. PAVEMENT.
 10. SEE SHEET A100.1 FOR AREAS OF FENCEMENT OUTSIDE OF THE BOUNDARY.
 11. REFER TO SHEET A100.1 FOR TREE TAGS.
 12. SEE SHEET A100.1 FOR LOCATION OF EXISTING BUILDINGS TO BE DEMOLISHED.
 13. SEE ALL SHEETS. SEE OWNER'S PRELIMINARY.

DESIGN DEVELOPMENT
TOWN OF EDISTO BEACH TOWN HALL
 2414 MURRAY STREET
 EDISTO BEACH, SC 29526

CAPLEA COE ARCHITECTS, INC.
 1043 MEANS STREET
 CHARLESTON, SC 29412
 803-797-2070

PROJECT NO.	23001
DESIGNER	GLP
APPROVER	Asst/Arch
DATE	04/20/24
SCALE	1" = 10'-0"

A100.1





11 01 FIRST FLOOR
SCALE: 1/4" = 1'-0"

REVISIONS

- NOTES:
- COPY / FAX MACHINE
 - CABINETRY - PLASTIC LAMINATE BASE & WALL CABINETS, SOLID SURFACE COUNTERTOPS
 - ADA RAMP TO DAIS (+0' - 7.5')
 - REFRIGERATOR WITH ICE MAKER
 - STOREFRONT BORROWED LIGHT
 - FILE STORAGE CABINETS
 - FLOOR OUTLETS THROUGHOUT ROOM
 - CUSTOM DAIS BENCH
 - EXTERIOR WALLS TO BE 1 HOUR FIRE BARRIERS, DOORS AND WINDOWS WITHIN WALLS TO BE 1 HOUR FIRE RATED.
 - WALL IN CHAMBERS TO BE 1 HOUR FIRE BARRIERS, DOORS AND WINDOWS WITHIN WALLS TO BE 1 HOUR FIRE RATED.
 - LINE OF MECHANICAL AREA ON ROOF.
 - LAPEYRE STAIR (SHIP'S LADDER) TO ROOF ACCESS
 - ROOF ACCESS HATCH ABOVE
 - ALUM. FLAGPOLES
 - CONCRETE PLANTER/SIGN WALL WITH WOOD SEATING CAP
 - STRUCTURAL COLUMN. SEE "S" SHEETS
 - FLOOR OUTLETS. SEE ELECTRICAL SHEETS & TECHNOLOGY SHEETS.
 - WALL MOUNTED LCD TV, SEE INTERIOR ELEVATION FOR MOUNTING HEIGHT (SEE ELEC & TECH. SHEETS)

GENERAL NOTES:

- ALL EXTERIOR STOREFRONT/WINDOWS TO BE HURRICANEIMPACT RESISTANT

TOTAL SQ. FT. = 9,800

DESIGN DEVELOPMENT

TOWN OF EDISTO BEACH TOWN HALL

2414 MURRAY STREET
EDISTO BEACH, SC 29438

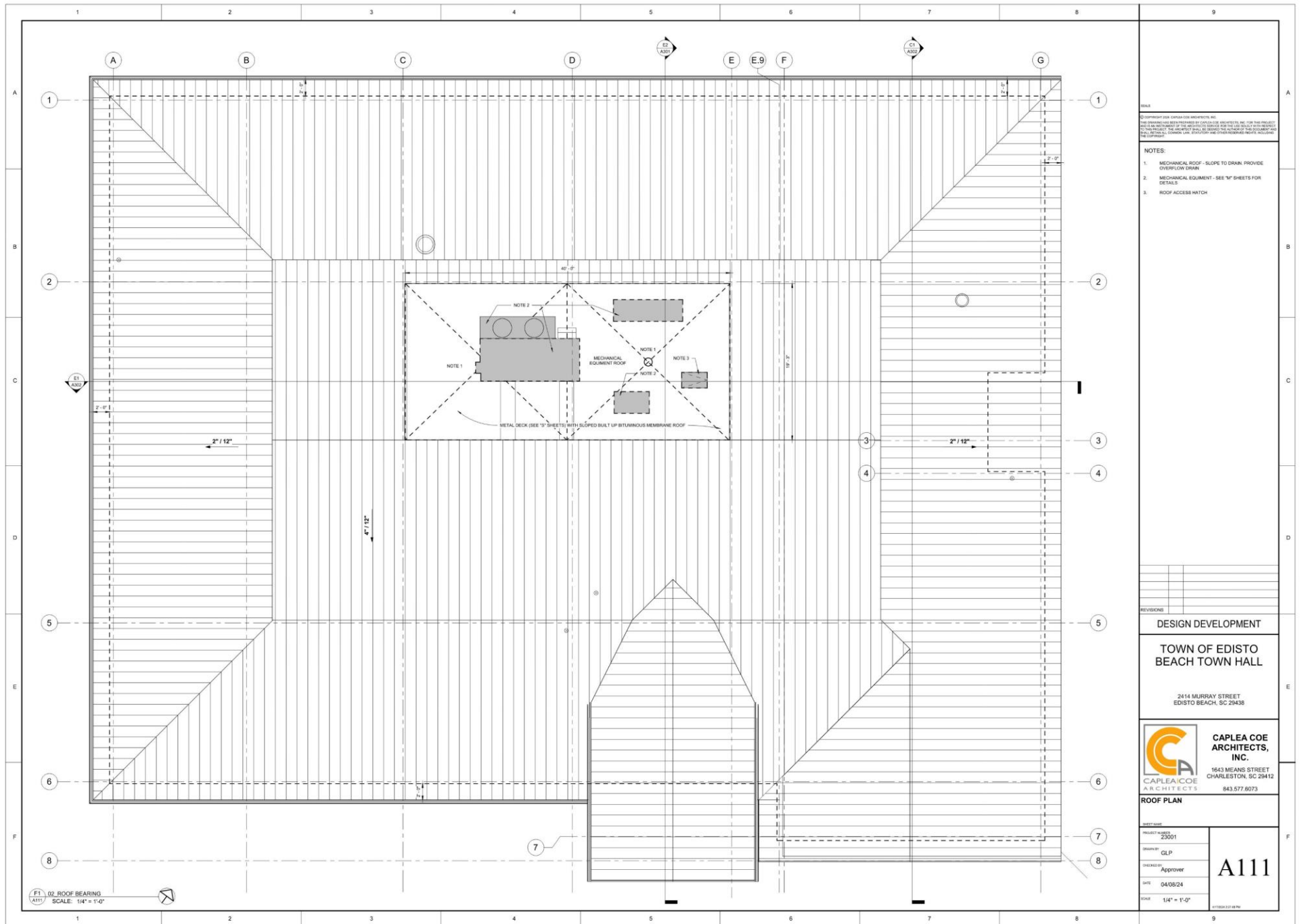
CAPLEA COE ARCHITECTS, INC.
1643 MEANS STREET
CHARLESTON, SC 29412
843.577.8073

1ST FLOOR PLAN

PROJECT NUMBER: 23001
DRAWN BY: GLP
CHECKED BY: Approver
DATE: 04/08/24
SCALE: 1/4" = 1'-0"

A101





P1 02 ROOF BEARING
 A111 SCALE: 1/4" = 1'-0"

REVISIONS

NO.	DATE	DESCRIPTION

- NOTES:
- MECHANICAL ROOF - SLOPE TO DRAIN PROVIDE OVERFLOW DRAIN
 - MECHANICAL EQUIPMENT - SEE 'M' SHEETS FOR DETAILS
 - ROOF ACCESS HATCH

DESIGN DEVELOPMENT

TOWN OF EDISTO
 BEACH TOWN HALL

2414 MURRAY STREET
 EDISTO BEACH, SC 29438

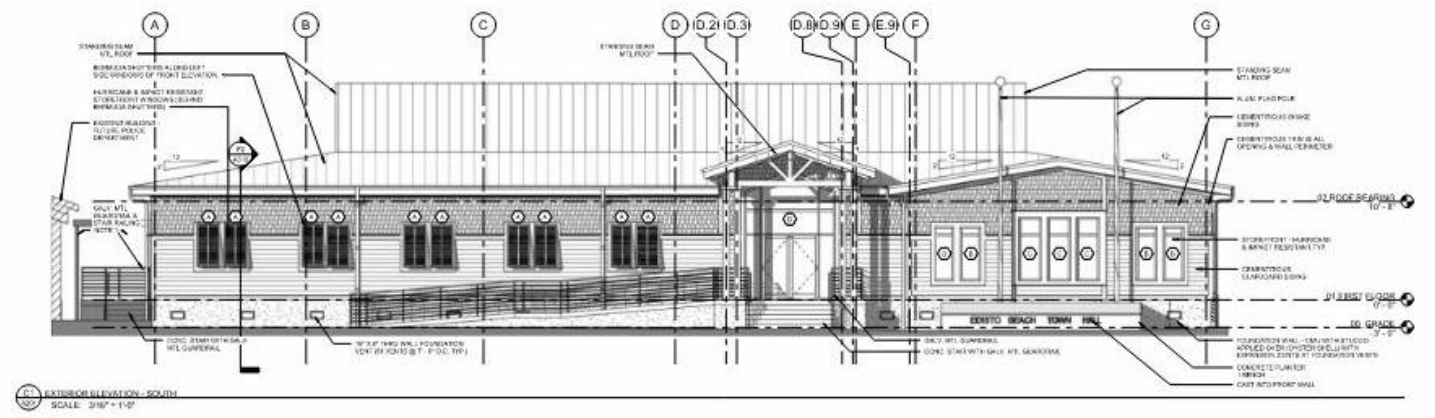


CAPLEA COE ARCHITECTS, INC.
 1643 MEANS STREET
 CHARLESTON, SC 29412
 843.577.8073

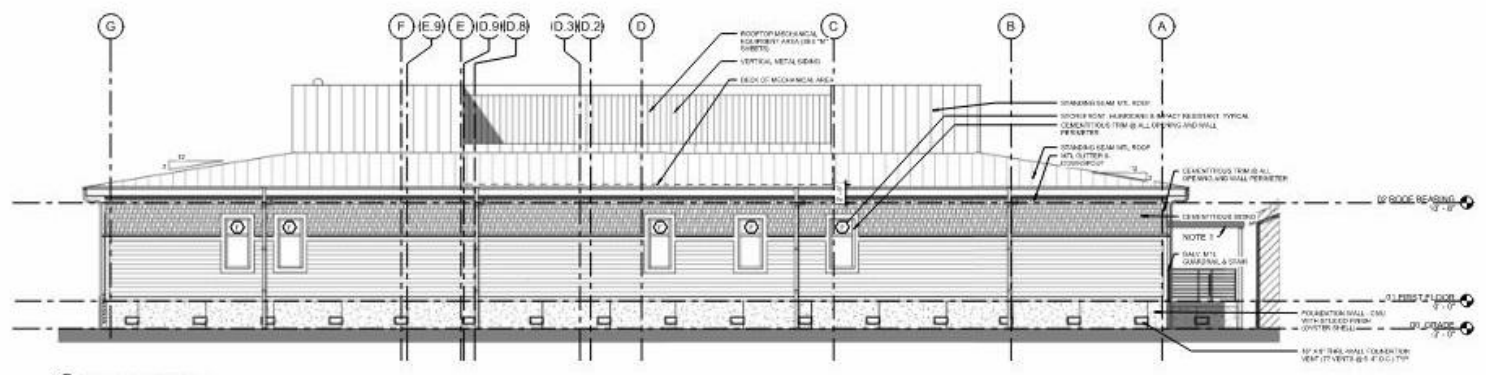
ROOF PLAN

PROJECT NUMBER: 23001	A111
DRAWN BY: GLP	
CHECKED BY: Approver	
DATE: 04/08/24	
SCALE: 1/4" = 1'-0"	





1.1 EXTERIOR ELEVATION - SOUTH
SCALE: 3/16" = 1'-0"



1.2 EXTERIOR ELEVATION - NORTH
SCALE: 3/16" = 1'-0"

NOTES:
1. ALUMINUM CANOPY WITH 4" X 4" COLUMNS COVERING EXTERIOR ENTRANCE TO TOWN HALL TO EXISTING TOWN HALL, INEA POLICE STATION.

DESIGN DEVELOPMENT
TOWN OF EDISTO BEACH TOWN HALL
2414 MURRAY STREET
EDISTO BEACH, SC 29436

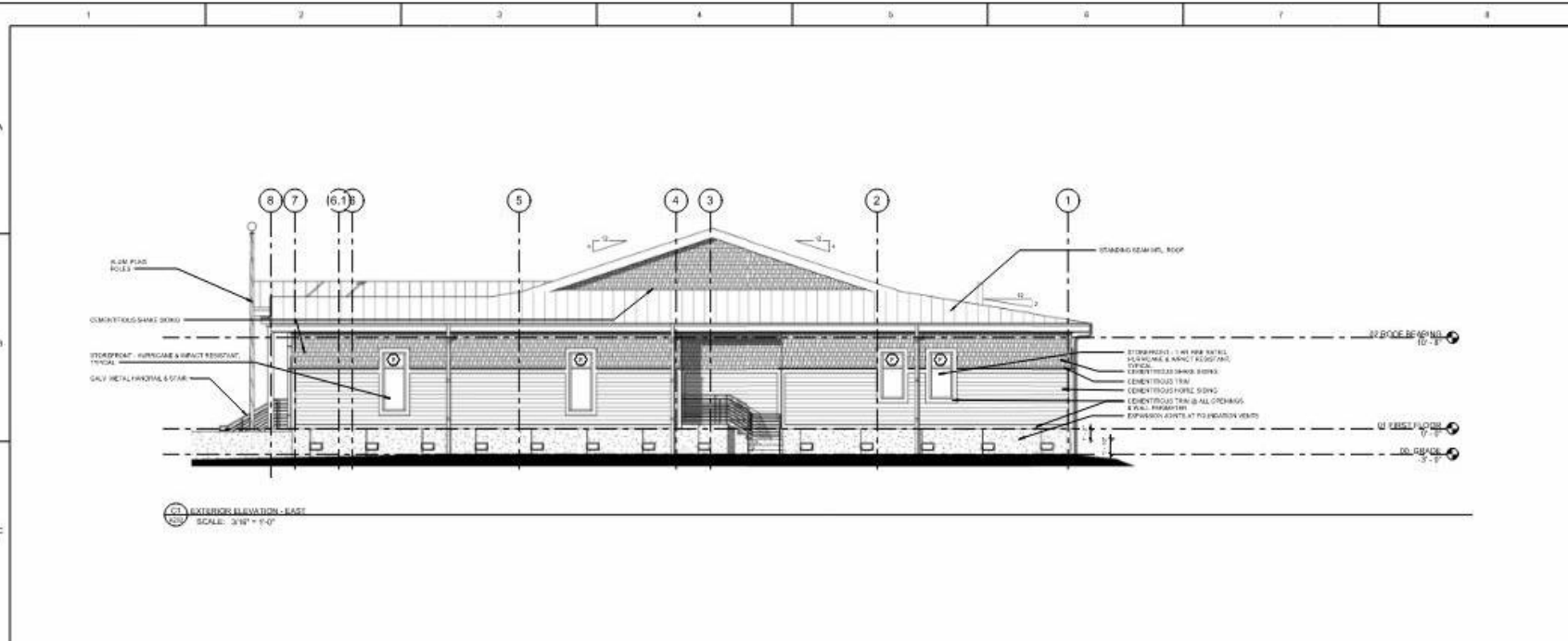
CAPLEA COE ARCHITECTS, INC.
1643 MEANS STREET
CHARLESTON, SC 29412
943.577.8373

EXTERIOR ELEVATIONS - SOUTH & NORTH

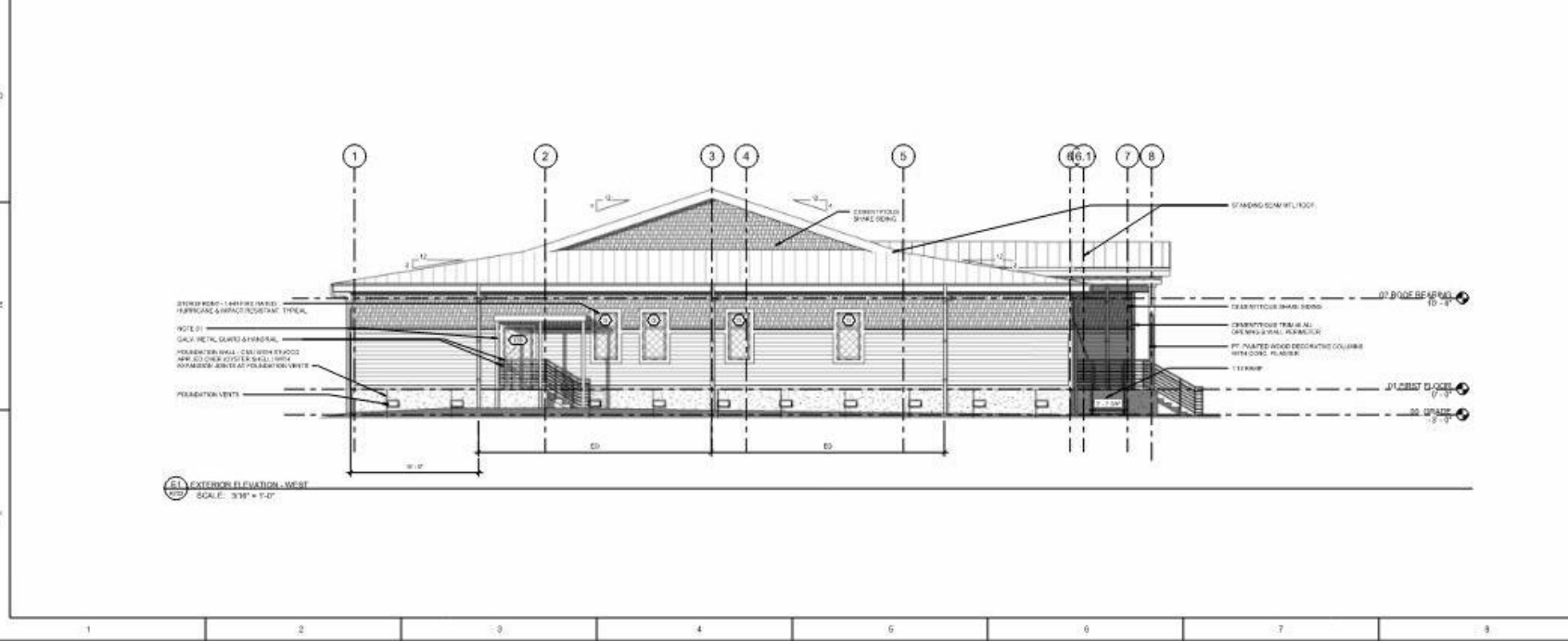
PROJECT NAME	23001
ARCHITECT	GLP
DESIGNED BY	Appover
DATE	04/08/24
SCALE	3/16" = 1'-0"

A201





62 EXTERIOR ELEVATION - EAST
SCALE: 3/16" = 1'-0"



61 EXTERIOR ELEVATION - WEST
SCALE: 3/16" = 1'-0"

NOTES:
1 ALUMINUM CANOPY WITH 4\"/>

NO.	DESCRIPTION

DESIGN DEVELOPMENT
TOWN OF EDISTO
BEACH TOWN HALL
3414 MURRAY STREET
EDISTO BEACH, SC 29438

CAPLEA COE ARCHITECTS, INC.
1943 MEANS STREET
CHARLESTON, SC 29412
843.577.9373

EXTERIOR ELEVATIONS - EAST & WEST

PROJECT NO:	20001
DRAWN BY:	QLP
DATE:	04/28/24
SCALE:	3/16" = 1'-0"
A202	



CURRENT DESIGN



Edisto Beach Town Hall
DESIGN
DEVELOPMENT
\$9-10M New Facility





STEVE COE AIA, LEED BD+C
PRINCIPAL IN CHARGE

CONTACT

Phone: (843) 577.6073

Email: scoe@capleacoe.com